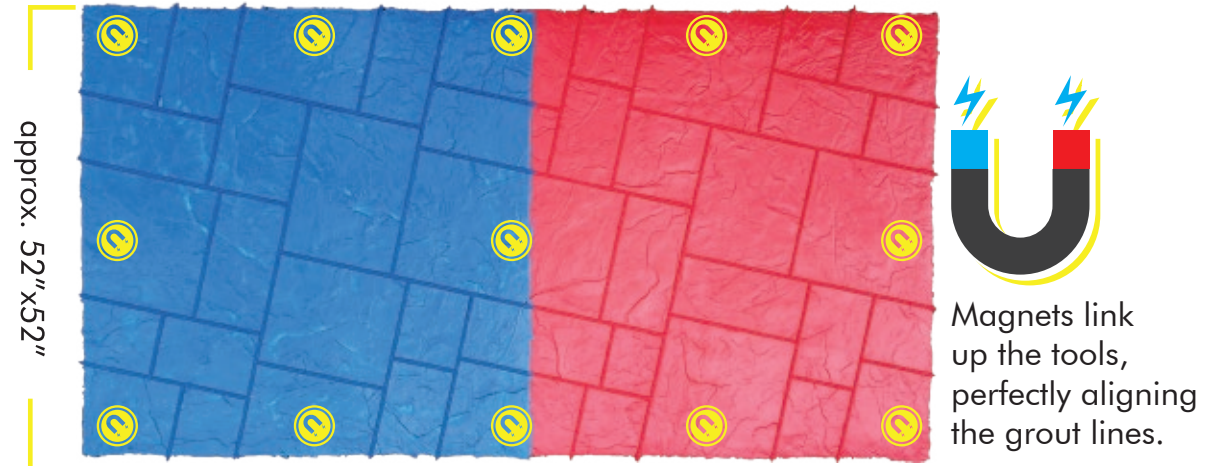


## MAGNETIC SEAMLESS PATTERN STAMPS



- Over 4x the coverage of traditional tool
- Touch up work with perfect stamping results
- Feather edges for seamless transitions in texture

- Lightweight for less fatigue
- No joint squeeze out



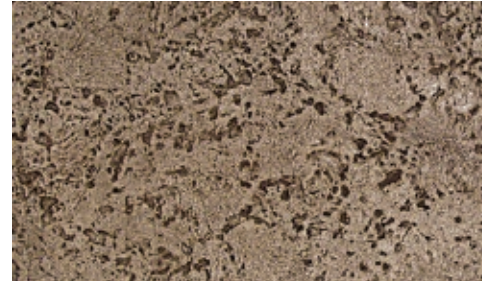
12' Sunburst Reclaimed Timber  
S-MD7200SM-SET  
12' Set, 2(Center),  
2(Small Outside) 2 SKINS



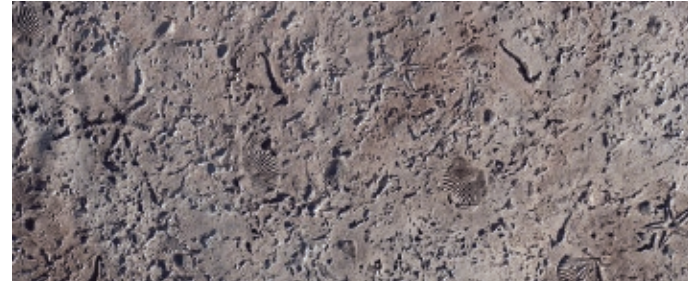
Belgium Slate  
5BE, 4BE, 3BE,  
3 (SELECT SIZE), 2-2BE



Blue Ridge  
5BR, 4BR, 3BR,  
3 (SELECT SIZE), 2-2BR



Coquina W/O Shells  
5CQ, 4CQ, 3CQ,  
3(SELECT SIZE), 2-2CQ



Coquina With Shells  
5CQS, 4CQS, 3CQS,  
3 (SELECT SIZE), 2-2CQS



Fieldstone  
5FS, 4FS, 3FS,  
3 (SELECT SIZE), 2-2FS



Inca  
5IN, 4IN, 3IN,  
3 (SELECT SIZE), 2-2IN



Italian Slate  
5IS, 4IS, 3IS,  
3(SELECT SIZE), 2-2IS



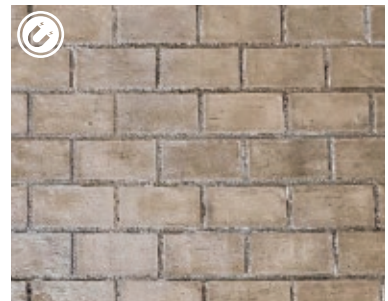
Light Sandstone  
5SL, 4SL, 3SL,  
3(SELECT SIZE), 2-2SL



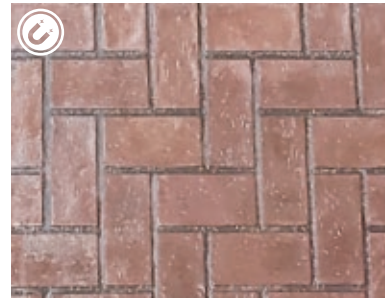
Old Granite  
5OG, 4OG, 3OG  
3 (SELECT SIZE), 2-2OG



Roman Slate  
5RS, 4RS, 3RS  
3 (SELECT SIZE), 2-2RS



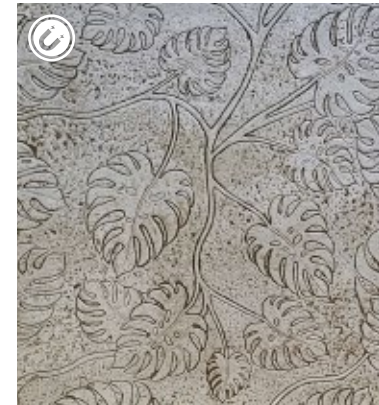
Boston Running Bond  
SMP410  
6 SMP410, 2 2BK



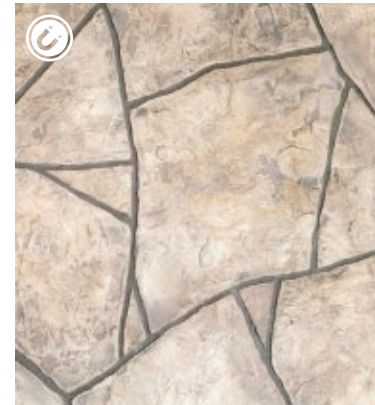
Boston Herringbone  
SMP400  
6 SMP400, 2 2BK



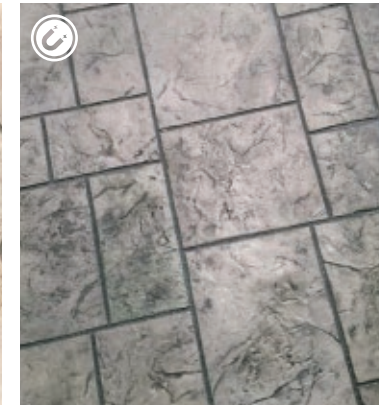
Carmel Bluestone Ashlar  
SMP210  
3A, 3B, 1/2 tool, 2 2BL



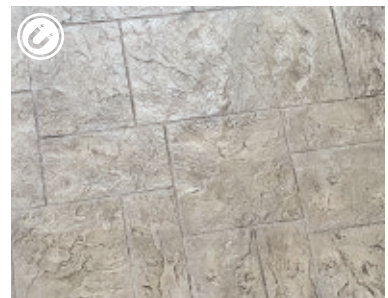
Monstera  
SMP800  
2A, 2B



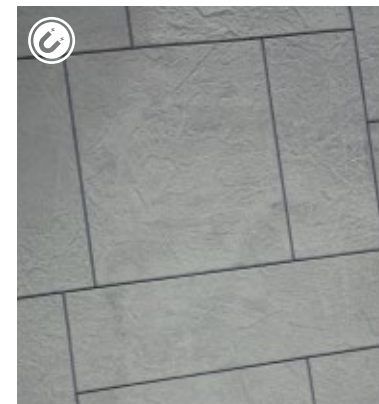
Sedona Flagstone  
SMP100  
3A, 3B, 1/2 tool, 2 2SE



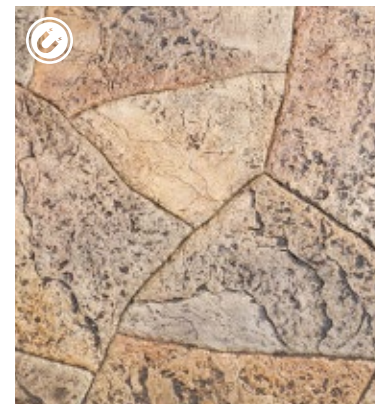
Monterey Ashlar  
SMP200  
3A, 3B, 1/2 tool, 2 2RS



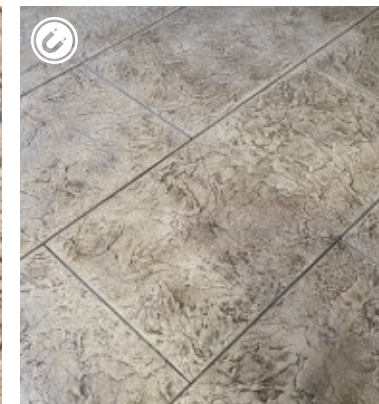
Pocono Bluestone Ashlar  
SMP220  
3A, 3B, 1/2 tool, 2 2BR



Aspen Blue Stone  
Large Ashlar  
SMP225  
3A, 3B, 1/2 tool, 2 2BR



Inca Flagstone  
SMP130  
3A, 3B, 1/2 tool, 2 2IN



Fieldstone Paver  
SMP530  
3A, 3B, 2 2FS



Napa Random Stone  
SMP120  
6 SMP120, 1/2 tool, 2 2BR



Castle Stone  
RS180  
6 REG, 1 FLEX, 2 2BL  
\*1-HT12H



Random Sandstone  
Hammered Edge  
RS130  
6 REG, 1 FLEX, 1-2SL,  
\*1-W14R, \*1-ST



River Rock  
RS150  
5 REG, 1 FLEX, 2-2LC,  
\*1-W14R, \*1-ST



Arizona Flagstone  
RS300  
2A, 2B, 2C, 1 FLEX, 2-2SL,  
\*1-W38T, \*1-ST



Ashlar Lorenzo Travertine  
AS1000  
2A, 2B, 2C, 1 FLEX, 2 2TRC  
\*1-WHE, \*1-HT12S, \*1-HT8S



Connors Quarry Stone  
AS1100  
2A, 2B, 2C, 1 FLEX, 2-2QS  
\*1-W18, \*1-HT12S, \*1-HT8S



Herringbone  
Used Brick  
BK100  
6 REG, 1 FLEX, 2-2BK,  
\*1-W38R, \*1-HT8S, \*1-HT4S



Running Bond  
Used Brick  
BK200  
6 REG, 1 FLEX, 2-2BK,  
\*1-W38R, \*1-HT8S, \*1-HT4S



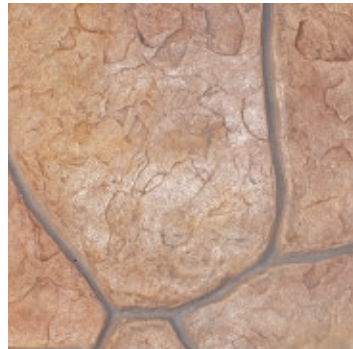
San Diego Flagstone  
RS350  
2A, 2B, 3C, 1 FLEX, 2-2SL,  
\*1-W38T



Sante Fe  
Random Large Stone  
RS800  
3A, 3B, 1 FLEX, 2-2SL,  
\*1-W14R, \*1-ST



Grand Sandstone  
Thin Joint  
RS500  
3 REG, 1 FLEX, 2-2SL,  
\*1-W14R, \*1-ST



Grand Sandstone  
Wide Joint  
RS400  
3 REG, 1 FLEX, 2-2SL,  
\*1-W38R, \*1-ST



Running Bond  
New Brick  
BK250  
6 REG, 1 FLEX, 2-2BK,  
\*1-W38T



Basketweave  
Used Brick  
BK300  
6 REG, 1 FLEX, 2-2BK,  
\*1-W38T, \*1-HT8S, \*1-HT4S



Italian Slate  
12"x12" Tile  
ST1250  
5 REG, 1 FLEX, 2-2IS,  
\*1-W14R, \*1-HT12S



Saltillo  
12"x12" Tile  
ST1215  
6 REG, 1 FLEX,  
\*1-W38T, \*1-HT12S



London Cobble  
CS300  
6 REG, 1 FLEX, 2-2LC,  
\*1-W14R, \*1-HT12S, \*1-HT8S



Old Cobble Stone  
CS100  
6 REG, 1 FLEX, 2-2FG,  
\*1-W14R, \*1-HT12S, \*1-HT4S



Appian Cobble Small  
CS400  
3A, 3B, 1 FLEX, 2-2FG,  
\*1-WE, \*1-HT12S, \*1-HT4S



Ashlar Old Granite  
AS200  
2A, 2B, 2C, 1 FLEX, 2-2OG,  
\*1-W14R, \*1-HT12S, \*1-HT8S



Light Sandstone  
12"x12" Tile  
ST1240  
5 REG, 1 FLEX, 2-2SL,  
\*1-W14R, \*1-HT12S



Herringbone Belgium Slate  
SL100  
6 REG, 1 FLEX, 2-2BE,  
\*1-WHE, \*1-HT12S



California Weave  
Belgium Slate  
SL600  
4 REG, 1 FLEX, 2-2BE



European Fan Small Stone  
EF100  
6 REG, 1 FLEX, 2-2FG,  
\*1-W14R, \*1-ST



Ashlar Roman Slate  
AS300  
2A, 2B, 2C, 1 FLEX, 2-2RS,  
\*1-W14R, \*1-HT12S, \*1-HT8S



Ashlar New England  
AS100  
2A, 2B, 2C, 1 FLEX, 2-2NE,  
\*1-W14R, \*1-HT12S, \*1-HT8S



Rotating Ashlar Roman Slate  
AS500  
6 REG, 1 FLEX, 2-2RS,  
\*1-W14R, \*1-HT12S, \*1-HT8S



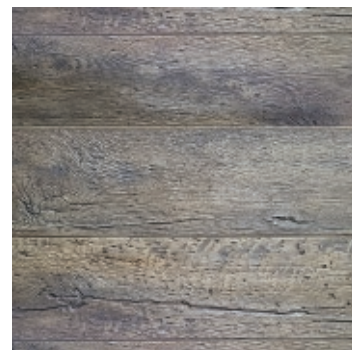
Rotating Ashlar Blue Stone  
AS700  
5 REG, 1 FLEX, 2-2BL,  
\*1-WHE, \*1-HT12S



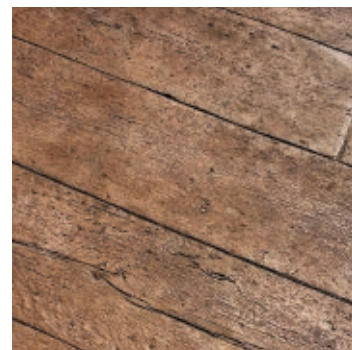
Random Boardwalk  
6" Planks  
BW170  
3 REG, 1 FLEX, 2-BW6,  
\*1-W18, \*1-HT4S



6" Random Planks  
With Knots(NO NAILS)  
S-BW600  
3 REG, 1 FLEX, 2-BW6,  
\*1-W18, \*1-HT4S



10" Reclaimed Timber  
S-BWR270  
6 REG, 4 PLANKS, 1 END CAP,  
2 SKINS  
\*1-W18F, \*1-HT12S



Reclaimed Timber  
BW1697  
BW8, BW12, BW16 PLANKS  
8 STAMPS 2 SKINS  
\*1-W18F, \*1-HT12S